

Latrobe watercolor presumed to be Long Branch, ca. 1810

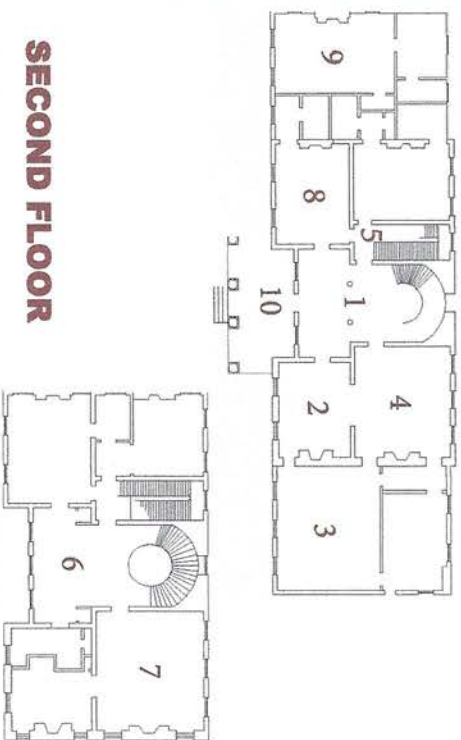
Long Branch Historic House & Farm is an architectural treasure originally built in 1811 and is sited on 400 rural acres with stunning views of the Blue Ridge Mountains. Inside this home, we invite you to experience this beautiful place by walking throughout its grand spaces and gardens.

Reminders & Cautions: The Historic House is over 200 years old; please treat it with respect and care. Some floors may be uneven and you should look before you step. Also, please leave objects and furnishings where they are and do not cross safety barriers.

Basic Facts & Figures:

- Date of Construction: Circa 1811
- Architect: Local-builder architect & Benjamin Latrobe (architect of US Capitol)
- First owner: Robert Carter Burwell (originally from tidewater of Virginia, near Williamsburg)
- Major Renovations: Ca. 1842 Greek Revival Update, Ca. 1986 Harry Z. Isaacs addition of west wing
- 19th century plantation crop: Wheat was grown here and throughout the Shenandoah Valley.
- Current owner: Harry Z. Isaacs Foundation, a 501c3 Non-Profit Organization

FIRST FLOOR



1 - GRAND HALL

It was from this southern facing door that visitors, guests and family entered Long Branch. The view you have today is very similar to the way Long Branch looked, after 1842. Before the 1840s, Long Branch did not have the Greek-revival elements it has today (columns, cornice, door frames, etc.). Those elements were added long after the first owner. The clock and chest in this hall are original pieces to the home.

2 - A PROPER PARLOR

Socializing, music, drinking, and meetings - they all occurred here in Long Branch's parlor. The parlor has been restored and refurbished to its 1850s appearance. The pocket doors are original to that period and were originally faux-grained mahogany. They allowed this room to be shut off from the dining room while slaves prepared and cleared the space. Prior to the Civil War, the Nelson family owned Long Branch and had several domestic slaves who catered to the family's needs.

NEXT STOP: Proceed to the gallery straight ahead.

3 - MAIN GALLERY

Enjoy the current art exhibit which features the work of talented artists and changes on a regular basis. All works are for sale and please make any inquiries about purchases in the main office. This room was historically used for storage and kitchen items.

NEXT STOP: After completing this exhibit continue to the blue room beyond the exit of the gallery.

4 - DINING AT LONG BRANCH

This was the 19th century dining room here at Long Branch. Flanked by a striking mahogany sideboard and ornate stove, this room was where the Nelson's entertained and impressed. A set of stairs behind the closed door led to the winter kitchen downstairs.

NEXT STOP: Proceed across the entry hall to the enclosed staircase beyond the next door.

5 - A STAIRCASE FOR SERVANTS

This staircase, painted in its original ca. 1830s colors, was included at the suggestion of architect Benjamin Latrobe. His concept was to provide a second staircase to be used by servants to make their way between floors outside the view of the Nelsons and their visitors.

NEXT STOP: Continue up the staircase to the second floor.

6 - A SIMPLE SITTING SPACE

According to records, this space was sparsely furnished - a few chairs, pine tables and chests. Based on research, historians believe this was used as a simple sitting space. Today, the space offers unparalleled views of the Blue Ridge Mountains to the south which overlooks the chain of mountains that becomes Shenandoah National Park. Looking up the staircase, you can see the third floor which once was used as temporary slave quarters and provides access to the Belvedere atop the house. The third floor is NOT open to the public.

NEXT STOP: Museum Room/Archives

7 - MUSEUM ROOM/ARCHIVES

This space is dedicated to the history of Long Branch and was originally one of five bedrooms in the home. During the renovation by Harry Isaacs, this suite was selected as his personal bedroom. Here, you may view a video about Long Branch which is narrated by Mr. Isaacs' friend, Willard Scott. The bedroom suite on the other side of the sitting room is now used as the Bride's Room for weddings.

NEXT STOP: Please continue down the main spiral staircase and continue through the entry hall into the wallpapered room.

8 - ISAACS' HUNT ROOM

This room has been purposely left as the last owner Harry Isaacs' refurbished it in the 1980s. Titled his "Hunt Room", the wallpaper was added by Harry and the furnishings are his - including the paintings and trophies, a testament to his lifelong involvement in horse racing.

NEXT STOP: Continue on to the gallery straight ahead.

9 - WEST WING GALLERY - Please enjoy the changing art exhibit.

10 - EXTEND YOUR VISIT

After you've completed the tour of the house, we encourage you to use our outdoor walking guide to see some of the interesting and historic spots across our landscape. Of special interest are our Sheila McQueen gardens established by Martha Cook. We hope that you enjoy Long Branch and return soon!